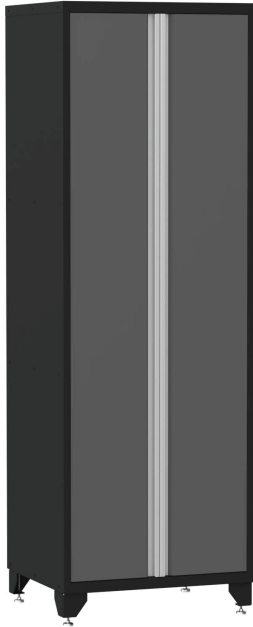
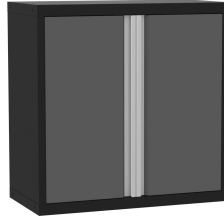


## LOCKERS

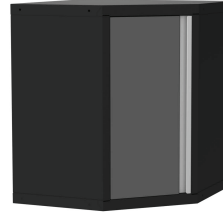


**1-DOOR / 2-DOOR LOCKER**  
18", 24" DEPTH  
20", 28", 36" WIDTH

## UPPERS

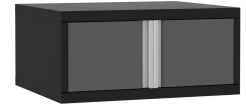


**1-DOOR / 2-DOOR UPPER**  
14" DEPTH  
20", 28", 36" WIDTH



**1-DOOR CORNER UPPER**  
14" DEPTH  
24" WIDTH

## OVER FRIDGES



**OVER FRIDGE**  
18", 24" DEPTH  
20", 28", 36" WIDTH

## LOWERS



**1-DOOR / 2-DOOR LOWER**  
18", 24" DEPTH  
20", 28", 36" WIDTH



**1-DRAWER & 1-DOOR LOWER**  
**1-DRAWER & 2-DOOR LOWER**  
18", 24" DEPTH  
20", 28", 36" WIDTH



**5-DRAWER LOWER**  
18", 24" DEPTH  
20", 28", 36" WIDTH

## SPECIALTY



**2-DOOR SHORT BASE BENCH**  
18" DEPTH  
28", 36" WIDTH



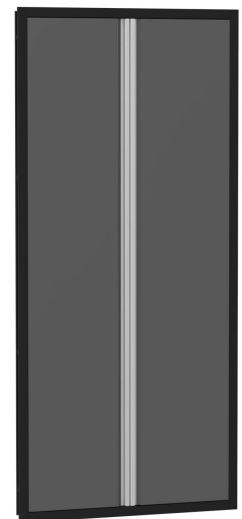
**1-DRAWER DESK MOUNT**  
18", 24" DEPTH  
28" WIDTH



**THE VAULT**  
24" DEPTH  
36" WIDTH



**2-DOOR OPEN GEAR LOCKER**  
18", 24" DEPTH  
28", 36" WIDTH



**DOOR FRAME**  
5.63" DEPTH  
28", 36", 42" WIDTH

### ADDITIONAL ADD-ONS

- Light bars
- Countertops
- Pull out shelves
- Coat rods
- Kick plates
- Light valances
- Corner Brackets
- Backsplashes